

# MICRO SWITCH

A DIVISION OF MINNEAPOLIS-HONEYWELL REGULATOR COMPANY  
MINNEAPOLIS, MINNESOTA

FED. MFR. CODE 91929

# SWITCH - BASIC

CATALOG LISTING

## BZ-2RW82-A2

M BZ-2RW82-A2

PAGE 1 OF 1

DRAWING NUMBER

9

ISSUE

REPLACES

RELEASE NO.

CHECK

**REVISIONS**

A	CO 16736	GCH 27 MAR 62
B	CO34306	DJW 17 JUL 75
C	CO- 73287-B	DHD 19 MAY 93
D	CO- 75204B	KDR 1 FEB 94
E	CO- 77589	MAM 29 MAR 94
F	CO93346	DLT 11 SEP 98

CHECK

11 APR 62

CHECK

DAW

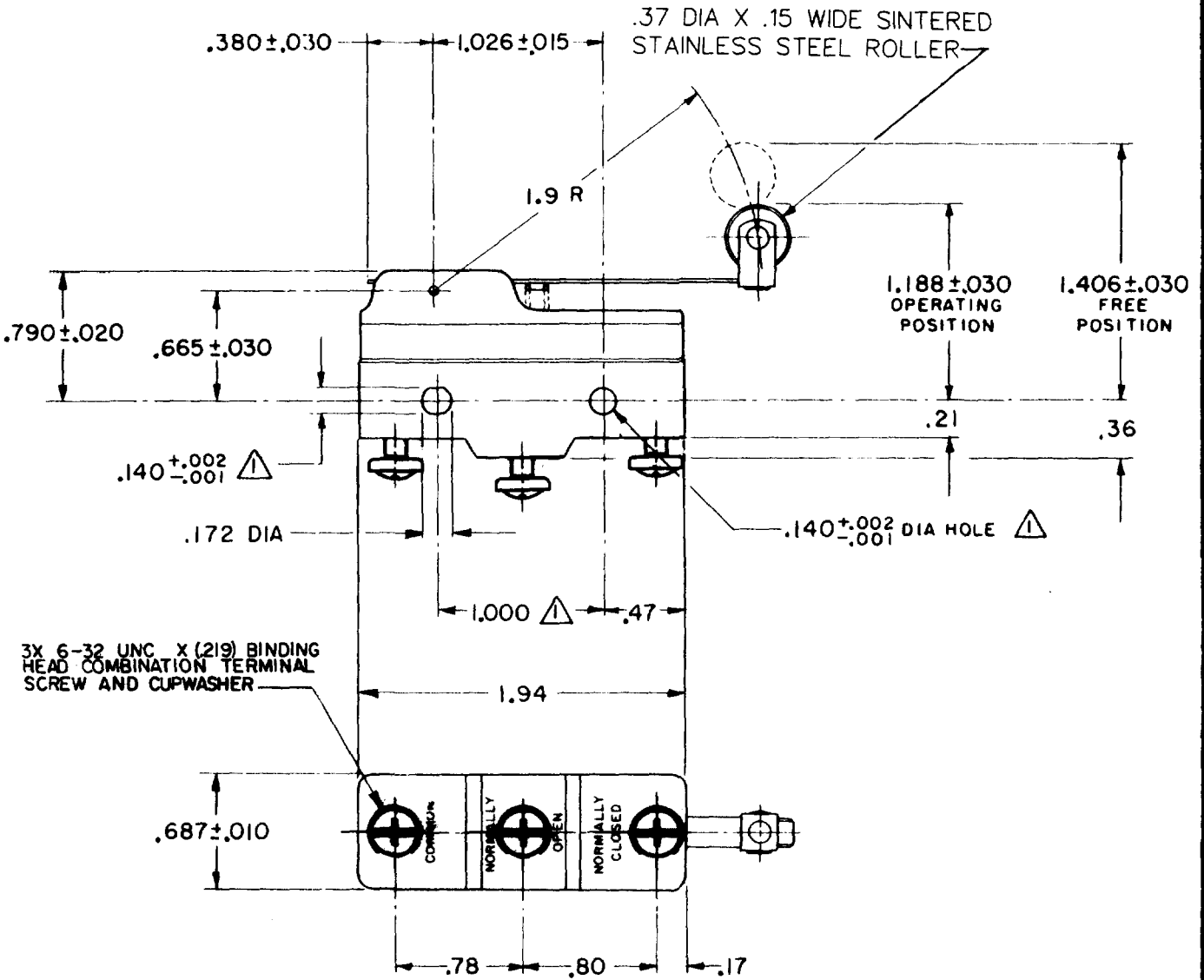
CHECK

27 MAR 62

GCH

FORMTEK

FO-90378



**NOTE**  
 ▲ MOUNTING HOLES WILL ACCEPT PINS OR SCREWS OF .139 MAX DIA ON 1.000 ± .002 CENTERS

THIS DRAWING COVERS A PROPRIETARY ITEM AND IS THE PROPERTY OF MICRO SWITCH, A DIVISION OF MINNEAPOLIS-HONEYWELL REGULATOR CO. THIS DRAWING IS NOT TO BE COPIED OR USED WITHOUT THE APPROVAL OF MICRO SWITCH.

CHARACTERISTICS	ELECTRICAL DATA	SCALE FULL
OPERATING FORCE ----- 3 1/2 OZ MAX	CONTACT ARRANGEMENT S P D T	DO NOT SCALE PRINT
RELEASE FORCE ----- 3/4 OZ MIN	UNDERWRITERS' LAB. INC. LISTED RATINGS -L96- 16A-125, 250, OR 480 VAC 1/2 A-125 VDC; 1/4 A-250 VDC 1/8 HP-125 VAC; 1/4 HP-250 VAC	UNLESS OTHERWISE SPECIFIED DIMENSIONS ARE IN INCHES <b>TOLERANCES ARE:</b> ONE PLACE (.0) ±.030 TWO PLACE (.00) ±.015 THREE PLACE (.000) ±.005 ANGLES ±
DIFFERENTIAL TRAVEL ----- .004-.040	-L288- CE D SF -L299- -L306-	WEIGHT .076 LB
OVERTRAVEL ----- .156 MIN	16A 250V ~ T85 5E4	